

**AMENDMENT NO. 1**

**Professional Water and Wastewater Maintenance and Repair Services  
Pearl River Valley Water Supply District  
PRV# 25-100-8-99**

A number of questions have been asked by prospective respondents. The questions are listed below along with PRVWSD's responses.

1. **Question:** Can the District provide a map showing the extent of PRVWSD property?

**Response:** Yes. A map of the District is attached.

2. **Question:** Would the District consider providing office space for the Contractor's on-site supervisor to use that is collocated with the District Maintenance Division?

**Response:** Yes. Prospective respondents may schedule a time to tour the District Maintenance facility by contacting Mark Beyea at 769-231-9371.

3. **Question:** Would the District consider providing a designated space on the grounds of the District Maintenance facility for the Contractor to store its equipment that will be used for work included in the prospective water and wastewater maintenance and repair contract?

**Response:** Yes. Prospective respondents may schedule a time to tour the District Maintenance facility by contacting Mark Beyea at 769-231-9371.

4. **Question:** Would the District consider allowing the Contractor to utilize items of District equipment to perform work under the prospective water and wastewater maintenance and repair contract, and if so, what equipment would be made available?

**Response:** Yes. A list of equipment that will be made available to the Contractor is attached. Prospective respondents may schedule a time to inspect the equipment by contacting Mark Beyea at 769-231-9371.

Approved  
PRVWSD

By: 

7-11-2025

The recipient of this Amendment shall indicate receipt thereof by signature on the line below.  
**A signed copy of this Amendment shall accompany the proposal.**

---

Signature and Title

---

Company Name

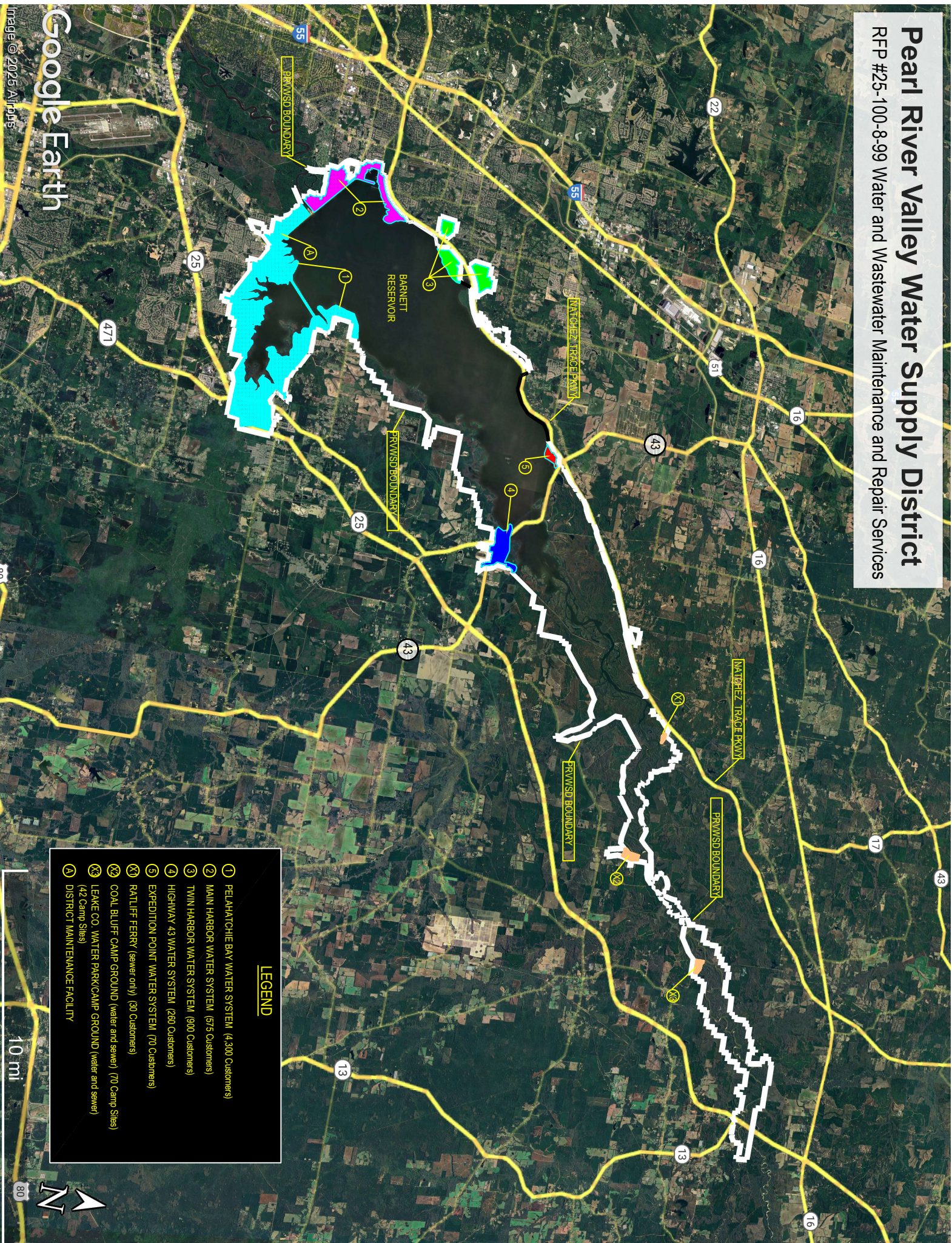
---

Date



# Pearl River Valley Water Supply District

RFP #25-100-8-99 Water and Wastewater Maintenance and Repair Services





RFP #25-100-8-99

Professional Water and Wastewater Repair and Maintenance Services  
Pearl River Valley Water Supply District

Water/Sewer Maintenance and Repair Equipment

Type	Make	Model
Mini Excavator	Kubota	KX-040R1A
Mini Excavator	Caterpillar	303.5
Vacuum Excavator	Ditch Witch	
Sewer Cleaning Machine	Sewer Equip. Co. of America	
Boom Truck	International	Navistar 4700
Sewer Camera	Insight/Vision	Iris Pan & Tilt Main Line Crawler
Excavator*	John Deere	210G
Tandem Dump Truck*	Freightliner	
Tandem Dump Truck*	Mack	
Tractor, Truck*	Ford	L9000
Trailer, Lowboy*	Johnson C S Co	25 Ton Capacity w/Hdydraulic Loading Ramps
Trailer, Lowboy*	Viking VFD49HB16 (M870A1)	40 Ton Capacity drop neck

\* Equipment would be available to contractor when not is use by PRVWSD Maintenance Division